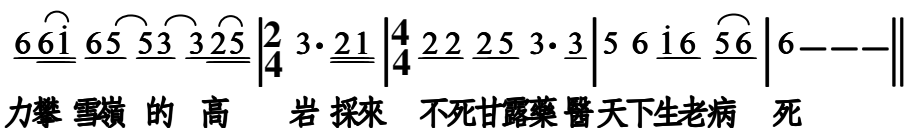
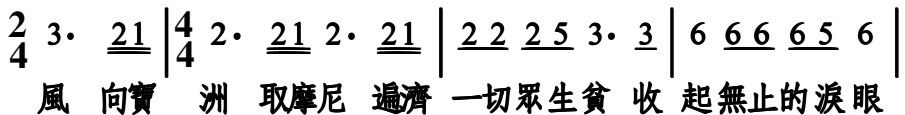
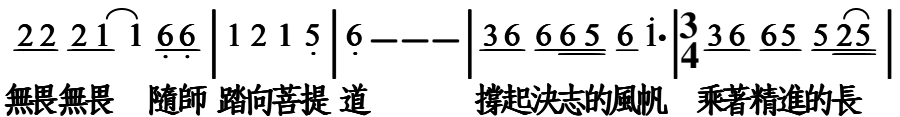
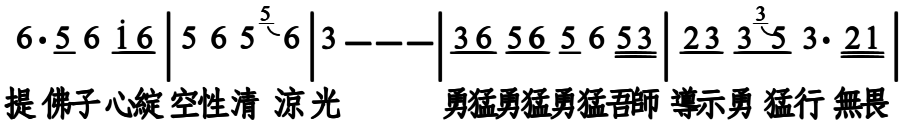
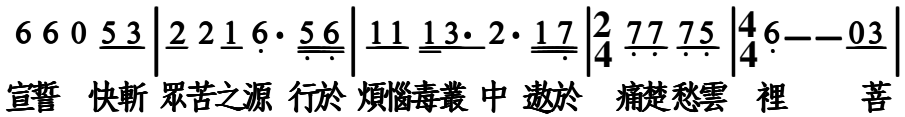
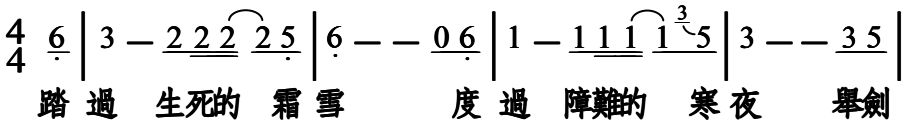


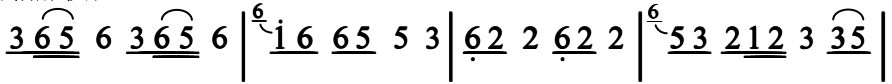
# 勇悍行（慢版）

B 調  
♩=84

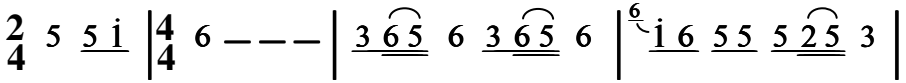
真如 詞曲



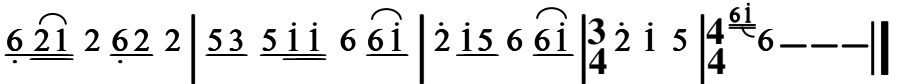
(稍加快)



向前 走向前 走 掙脫一切羈索 向前走向前走 拉緊你我的手勇



敢不回 頭 向前 走向前 走 直到蒼生度盡 頭



向前 走向前走 拉緊你我的手勇 悍不回頭勇 悍不回 頭